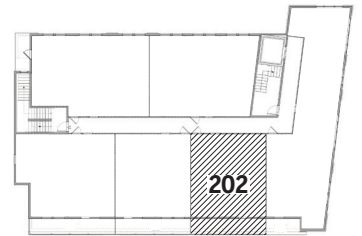
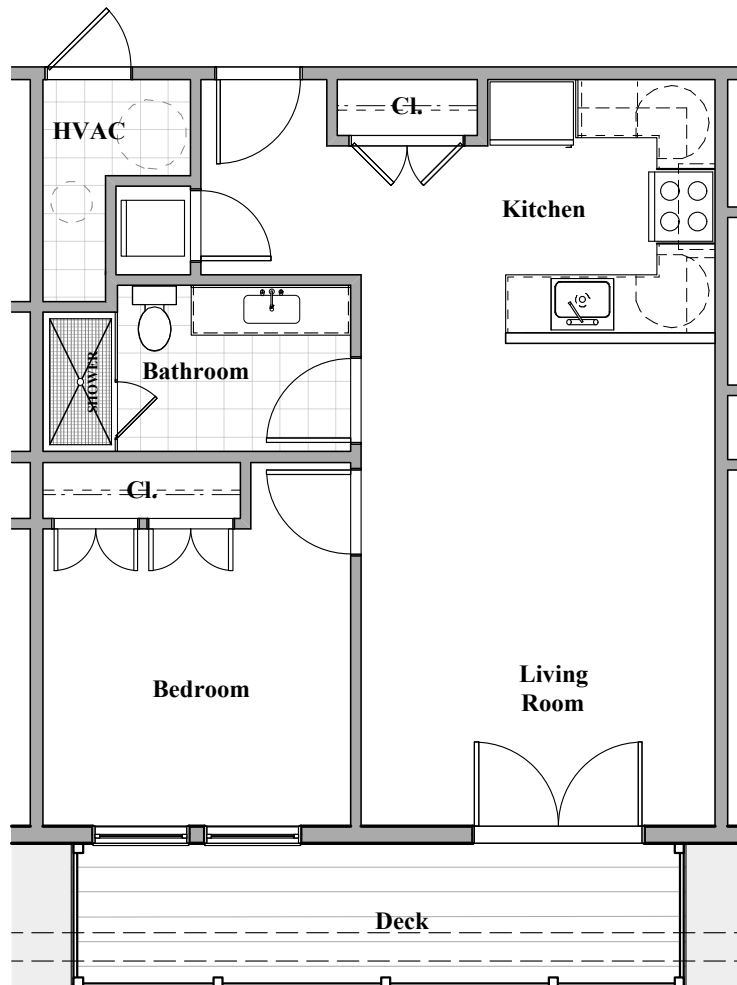


610 AVENUE RUTHERFORD

Under Reservation



Level 2



UNIT 202

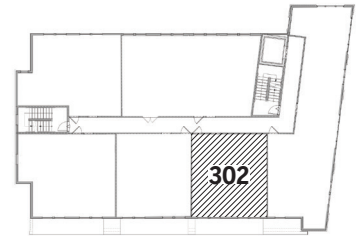
1 Bed | 1 Bath | 682 SF

\$515,000 | \$198.40 Condo Fee/Mo.

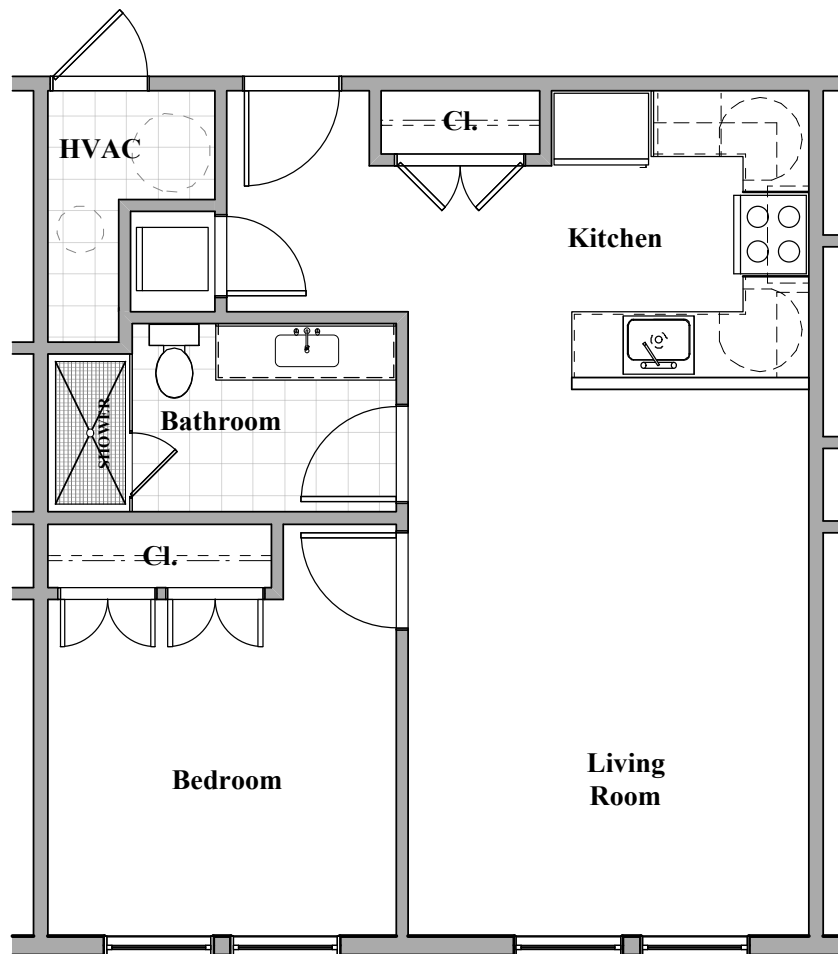
*The plans above are intended for marketing purposes only.
Room dimensions and overall square footage may vary slightly.*

610 AVENUE RUTHERFORD

Under Reservation



Level 3



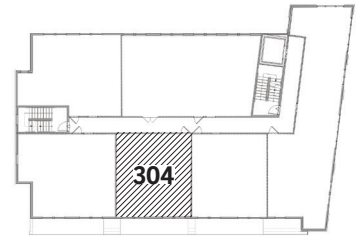
UNIT 302

1 Bed | 1 Bath | 682 SF

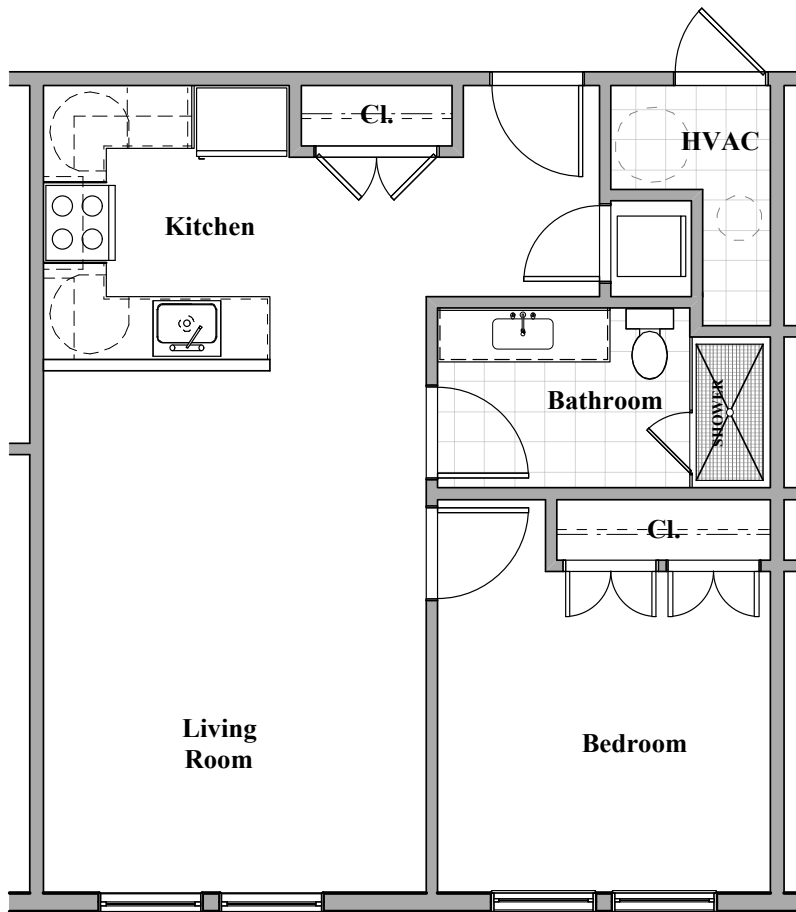
\$489,000 | \$198.40 Condo Fee/Mo.

*The plans above are intended for marketing purposes only.
Room dimensions and overall square footage may vary slightly.*

610 AVENUE RUTHERFORD



Level 3



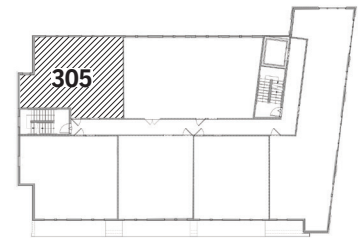
UNIT 304

1 Bed | 1 Bath | 682 SF

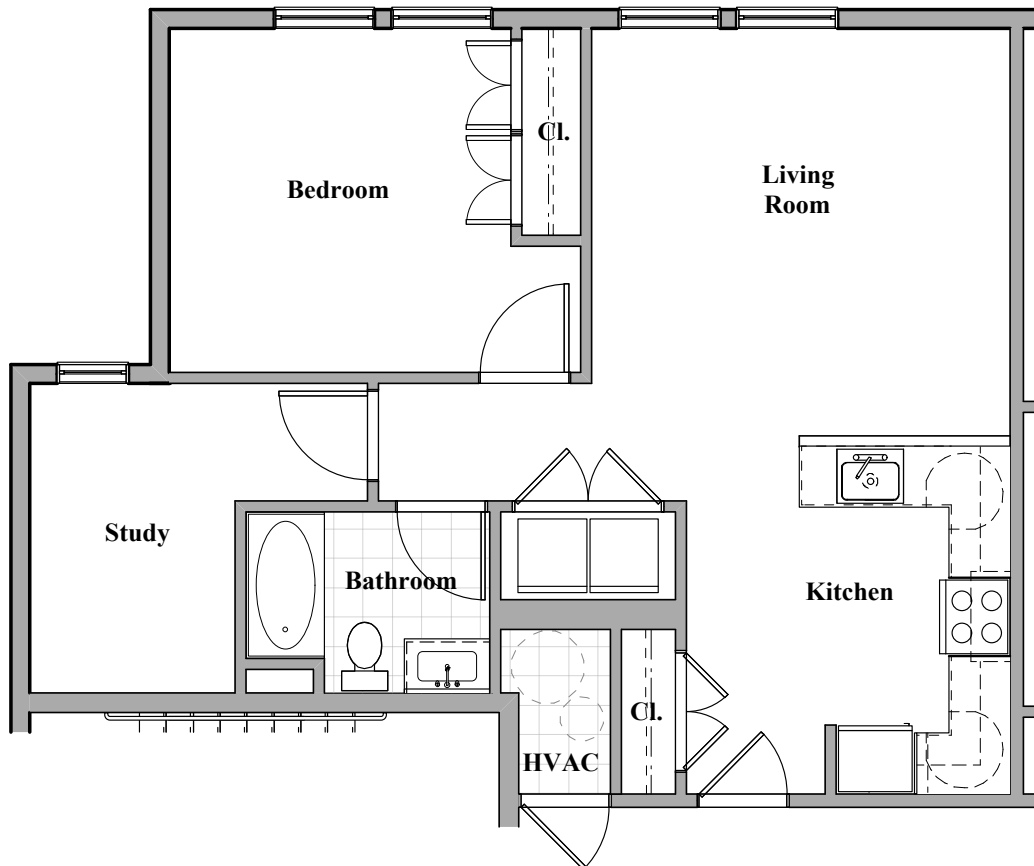
\$489,000 | \$198.40 Condo Fee/Mo.

*The plans above are intended for marketing purposes only.
Room dimensions and overall square footage may vary slightly.*

610 AVENUE RUTHERFORD



Level 3



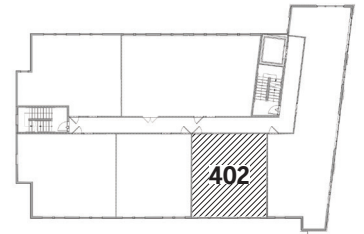
UNIT 305

1+ Bed | 1 Bath | 813 SF

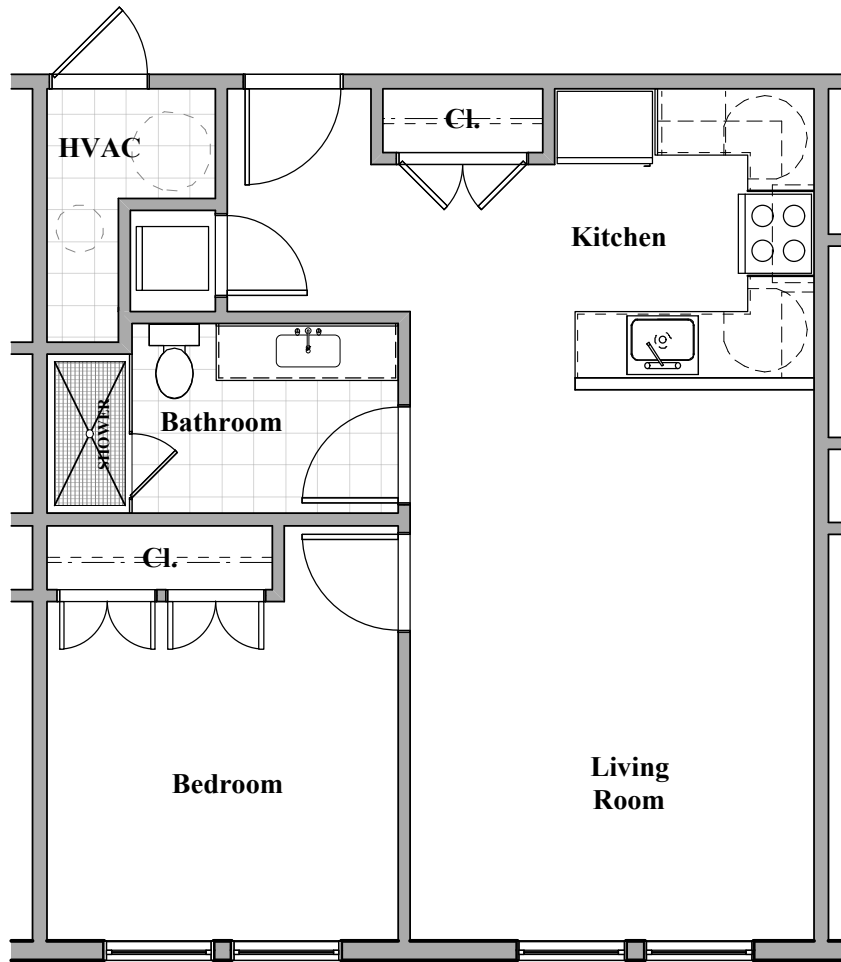
\$549,000 | \$248.00 Condo Fee/Mo.

*The plans above are intended for marketing purposes only.
Room dimensions and overall square footage may vary slightly.*

610 AVENUE RUTHERFORD



Level 4



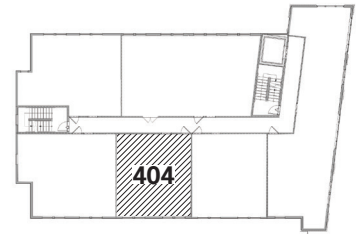
UNIT 402

1 Bed | 1 Bath | 682 SF

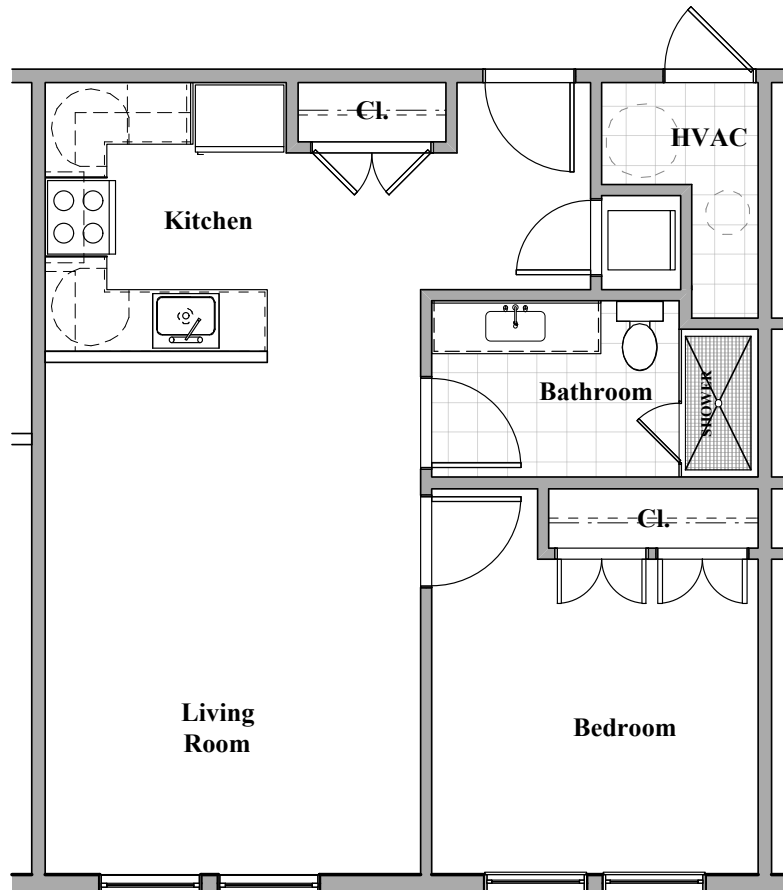
\$499,000 | \$198.40 Condo Fee/Mo.

*The plans above are intended for marketing purposes only.
Room dimensions and overall square footage may vary slightly.*

610 AVENUE RUTHERFORD



Level 4



UNIT 404

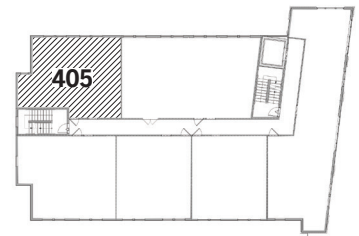
1 Bed | 1 Bath | 682 SF

\$499,000 | \$198.40 Condo Fee/Mo.

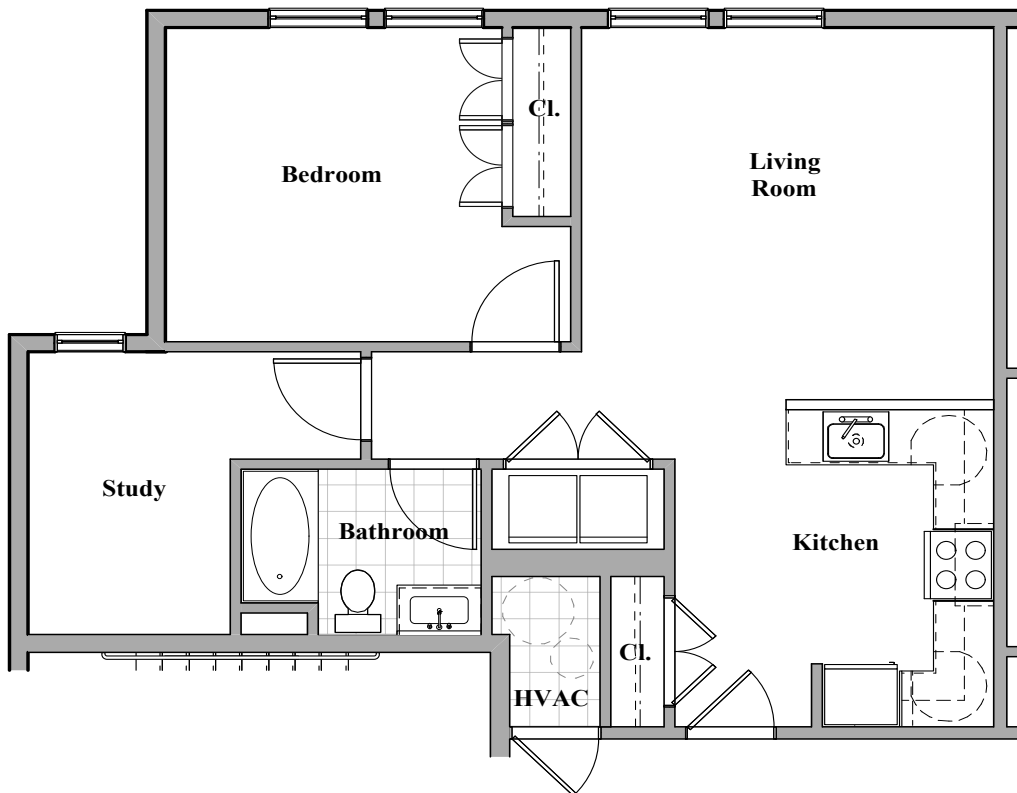
*The plans above are intended for marketing purposes only.
Room dimensions and overall square footage may vary slightly.*

610 AVENUE RUTHERFORD

Under Reservation



Level 4



UNIT 405

1+ Bed | 1 Bath | 813 SF

\$559,000 | \$248.00 Condo Fee/Mo.

*The plans above are intended for marketing purposes only.
Room dimensions and overall square footage may vary slightly.*